

TEST SIEVE

**200mm Ø**  
**25mm H**

STAINLESS  
STEEL FRAME

**200**



**C I S a**   
SIEVING TECHNOLOGIES





200

# 200mm Ø x 25mm H

STAINLESS STEEL FRAME



Request  
Calibration Certificate  
Service sieve



The sieve recommended by ISO, AFNOR, ASTM, BS, DIN, UNE standards.

Suitable **for wet sieving**.

Each sieve is laser marked with a serial number to ensure traceability.

**Delivered with a Certificate of Compliance** according to 2.1 EN 10204.

Frame material: AISI-304.

**Weight:** From 180 grams to 420 grams depending on the mesh opening.

**Recommended sample volumes depending on the opening:**

Opening	Volume	Opening	Volume	Opening	Volume
38 µ	12 cm <sup>3</sup>	125 µ	25 cm <sup>3</sup>	2.00 mm.	100 cm <sup>3</sup>
45 µ	15 cm <sup>3</sup>	250 µ	35 cm <sup>3</sup>	4.00 mm.	175 cm <sup>3</sup>
63 µ	16 cm <sup>3</sup>	500 µ	50 cm <sup>3</sup>	8.00 mm.	250 cm <sup>3</sup>
90 µ	20 cm <sup>3</sup>	1.00 mm	70 cm <sup>3</sup>	16.00 mm	500 cm <sup>3</sup>



## OPTIONS

**200.6** Wire mesh screens, standards ISO 3310.1 – ASTM E-11-2013

**200.7** Sieves with perforated plate, square holes. Standards ISO 3310.2 – ASTM E-323-2011

**200.8** Sieves with perforated plate, round holes. Standards ISO 3310.2 – ASTM E-323-2011

## INCLUDES

✓ Individual packing of each sieve with 100% recycled cardboard box, **which guarantees transport in perfect conditions.**

✓ Test certificate according to standard 2.1. EN 10204.

## ACCESSORIES

- Cover 200mm.Ø (code 0700001).
- Pan 200mm.Ø x 25mm.H (code 0700002).
- O ring 200mm.Ø (code J200).

## OPTIONS

- Calibration certificate according to ISO 3310, ASTM E-11, AFNOR NF X-11-504 and/or BS 410
- AISI-316 stainless steel frames
- Support meshes in openings < 100µ

## ATTENTION

**200 mm sieves are not compatible with 8" sieves (203 mm Ø)**

200

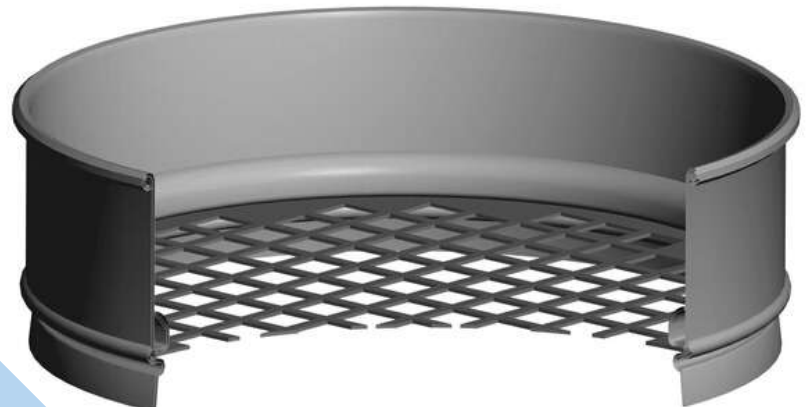
# 200mm Ø x 25mm H

STAINLESS STEEL FRAME



## 200.6 WIRE MESH SIEVES

ISO 3310.1	ASTM E-11-2013	Code CISA	ISO 3310.1	ASTM E-11-2013	Code CISA	ISO 3310.1	ASTM E-11-2013	Code CISA	ISO 3310.1	ASTM E-11-2013	Code CISA
20 µ	Nº 635	0700601	160 µ		0704801	1.00 mm	Nº 18	0709001	11.20 mm	7/16 in.	0714601
25 µ	Nº 500	0700801	180 µ	Nº 80	0705001	1.12 mm		0709201	12.50 mm	½ in.	0714801
32 µ	Nº 450	0701001	200 µ		0705201	1.18 mm	Nº 16	0709401	13.20 mm	0.530 in.	0715001
36 µ		0701201	212 µ	Nº 70	0705401	1.25 mm		0709601	14.00 mm		0715201
38 µ	Nº 400	0701401	224 µ		0705601	1.40 mm	Nº 14	0709801	16.00 mm	5/8 in.	0715401
40 µ		0701601	250 µ	Nº 60	0705801	1.60 mm		0710001	18.00 mm		0715601
45 µ	Nº 325	0701801	280 µ		0706001	1.70 mm	Nº 12	0710201	19.00 mm	3/4 in.	0715801
50 µ		0702001	300 µ	Nº 50	0706201	1.80 mm		0710401	20.00 mm		0716001
53 µ	Nº 270	0702201	315 µ		0706401	2.00 mm	Nº 10	0710601	22.40 mm	7/8 in.	0716201
56 µ		0702401	355 µ	Nº 45	0706601	2.24 mm		0710801	25.00 mm	1.00 in.	0716401
63 µ	Nº 230	0702601	400 µ		0706801	2.36 mm	Nº 8	0711001	26.50 mm	1.06 in.	0716601
71 µ		0702801	425 µ	Nº 40	0707001	2.50 mm		0711201	28.00 mm		0716801
75 µ	Nº 200	0703001	450 µ		0707201	2.80 mm	Nº 7	0711401	31.50 mm	1 1/4 in.	0717001
80 µ		0703201	500 µ	Nº 35	0707401	3.15 mm		0711601	35.50 mm		0717201
90 µ	Nº 170	0703401	560 µ		0707601	3.35 mm	Nº 6	0711801	37.50 mm	1 1/2 in.	0717401
100 µ		0703601	600 µ	Nº 30	0707801	3.55 mm		0712001	40.00 mm		0717601
106 µ	Nº 140	0703801	630 µ		0708001	4.00 mm	Nº 5	0712201	45.00 mm	1 3/4 in.	0717801
112 µ		0704001	710 µ	Nº 25	0708201	4.50 mm		0712401	50.00 mm	2.00 in.	0718001
125 µ	Nº 120	0704201	800 µ		0708401	4.75 mm	Nº 4	0712601	53.00 mm	2.12 in.	0718201
140 µ		0704401	850 µ	Nº 20	0708601	5.00 mm		0712801	56.00 mm		0718401
150 µ	Nº 100	0704601	900 µ		0708801	5.60 mm	Nº 3½	0713001	63.00 mm	2 1/2 in.	0718601
						6.30 mm	¼ in.	0713201	71.00 mm		0718801
						6.70 mm	0.265 in.	0713401	75.00 mm	3.00 in.	0719001
						7.10 mm		0713601	80.00 mm		0719201
						8.00 mm	5/16 in.	0713801	90.00 mm	3 1/2 in.	0719401
						9.00 mm		0714001	100.00 mm	4.00 in.	0719601
						9.50 mm	3/8 in.	0714201	106.00 mm	4.24 in.	0719801
						10.00 mm		0714401	112.00 mm		0720001
									125.00 mm	5.00 in.	0720201



200

# 200mm Ø x 25mm H

STAINLESS STEEL FRAME



## 200.7 SQUARE HOLES

### Square hole

The sieves with perforated plates included in this list strictly comply with the quality criteria required by ASTM E-323 and ISO 3310.2, as well as with regard to openings and distances between centers and thicknesses.

To avoid partial perforations with possible error in the screening result, the plates are not perforated in the area in contact with the frame.

**The standard EN 933-2 recommends the use of sieves with square perforated plates (according to ISO 3310.2), when the opening is 4 mm or more.**

ISO 3310.2	ASTM E-323-2011	Code CISA	ISO 3310.2	ASTM E-323-2011	Code CISA
4.00 mm	5/32 in.	0712261	22.40 mm	7/8 in.	0716261
4.50 mm		0712461	25.00 mm	1.00 in.	0716461
4.75 mm	3/16 in.	0712661	26.50 mm	1 1/18 in.	0716661
5.00 mm		0712861	28.00 mm		0716861
5.60 mm	7/32 in.	0713061	31.50 mm	1 1/4 in.	0717061
6.30 mm	¼ in.	0713261	35.50 mm		0717261
6.70 mm	17/64 in.	0713461	37.50 mm	1 1/2 in.	0717461
7.10 mm		0713661	40.00 mm		0717661
8.00 mm	5/16 in.	0713861	45.00 mm	1 3/4 in.	0717861
9.00 mm		0714061	50.00 mm	2.00 in.	0718061
9.50 mm	3/8 in.	0714261	53.00 mm	2 1/8 in.	0718261
10.00 mm		0714461	56.00 mm		0718461
11.20 mm	7/16 in.	0714661	63.00 mm	2 1/2 in.	0718661
12.50 mm	½ in.	0714861	71.00 mm		0718861
13.20 mm	0.530 in.	0715061	75.00 mm	3.00 in.	0719061
14.00 mm		0715261	80.00 mm		0719261
16.00 mm	5/8 in.	0715461	90.00 mm	3 1/2 in.	0719461
18.00 mm		0715661	100.00 mm	4.00 in.	0719661
19.00 mm	3/4 in.	0715861	106.00 mm	4.24 in.	0719861
20.00 mm		0716061	112.00 mm		0720061
			125.00 mm	5.00 in.	0720261

### Material of the perforated plates

Stainless steel AISI-304

200

# 200mm Ø x 25mm H

STAINLESS STEEL FRAME



## 200.8 ROUND HOLES

Round hole drilling



### Material of the perforated plates

Stainless steel AISI-304

ISO 3310.2	Código CISA	ISO 3310.2	Código CISA
0.50 mm.Ø	0707441	11.20 mm.Ø	0714641
1.00 mm.Ø	0709041	12.50 mm.Ø	0714841
1.80 mm.Ø	0710441	13.20 mm.Ø	0715041
2.00 mm.Ø	0710641	14.00 mm.Ø	0715241
2.50 mm.Ø	0711241	16.00 mm.Ø	0715441
3.55 mm.Ø	0712041	18.00 mm.Ø	0715641
4.00 mm.Ø	0712241	19.00 mm.Ø	0715841
4.50 mm.Ø	0712441	20.00 mm.Ø	0716041
4.75 mm.Ø	0712641	22.40 mm.Ø	0716241
5.00 mm.Ø	0712841	25.00 mm.Ø	0716441
5.60 mm.Ø	0713041	26.50 mm.Ø	0716641
6.30 mm.Ø	0713241	28.00 mm.Ø	0716841
6.70 mm.Ø	0713441	31.50 mm.Ø	0717041
7.10 mm.Ø	0713641	35.50 mm.Ø	0717241
8.00 mm.Ø	0713841	37.50 mm.Ø	0717441
9.00 mm.Ø	0714041	40.00 mm.Ø	0717641
9.50 mm.Ø	0714241	45.00 mm.Ø	0717841
10.00 mm.Ø	0714441	50.00 mm.Ø	0718041

### Non-standardized round openings

ISO 3310.2	Code CISA	ISO 3310.2	Code CISA
11.00 mm.Ø	0714541	21.00 mm.Ø	0716081
12.00 mm.Ø	0714741	22.00 mm.Ø	0716141
13.00 mm.Ø	0714941	24.00 mm.Ø	0716341
14.50 mm.Ø	0715341	30.00 mm.Ø	0716941
15.00 mm.Ø	0715381	32.00 mm.Ø	0717141

### Other openings on request

## ACCESSORIES

Pan and Cover  
200 mm. Ø

Wet sieving  
pan and cover 200 mm. Ø

Cleaning kit

Calibration Certificate  
according to ISO 3310, ASTM E-11,  
AFNOR NF X-11 and/or BS410

