

TEST SIEVE

8".Ø

2".H

STAINLESS
STEEL FRAME

203



C I S a 
SIEVING TECHNOLOGIES



203

8".Ø x 2".H

STAINLESS STEEL FRAME



Request
Calibration Certificate
Service sieve



The sieve recommended by ASTM and BS standards.

Adapted **for wet** sieving.

Individual laser-engraved identification of each sieve to ensure **traceability**.

Includes certificate of attestation according to 2.1 EN 10204.

Mirror polishing.

Weight: From 300 grams to 500 grams depending on the mesh opening.

Recommended sample volume depending on the opening:

| Opening | Volume | Opening | Volume | Opening | Volume |
|---------|--------------------|---------|---------------------|----------|----------------------|
| 38 µ | 25 cm ³ | 125 µ | 50 cm ³ | 2.00 mm. | 200 cm ³ |
| 45 µ | 30 cm ³ | 250 µ | 70 cm ³ | 4.00 mm. | 350 cm ³ |
| 63 µ | 35 cm ³ | 500 µ | 100 cm ³ | 8.00 mm. | 500 cm ³ |
| 90 µ | 40 cm ³ | 1.00 mm | 140 cm ³ | 16.00 mm | 1000 cm ³ |

REMARK

The 200mm Ø sieves do not fit with the sieves of 203mm Ø

OPTIONS

- Calibration certificate according to ASTM E-11, AFNOR NF X-11-504, BS 410 or ISO 3310 standards.
- Metal identification label.
- AISI-316 stainless steel frame for the pharmaceutical industry
- Support mesh assembly for openings < 100µm



CONFIGURATIONS

203.1 Sieves with metal mesh according to ISO 3310.1 – ASTM E-11-2013

203.2 Sieves with square perforated plate, standards ISO 3310.2 – ASTM E-323-2011

203.3 Sieves with round perforated plate, standards ISO 3310.2 – ASTM E-323-2011

INCLUDED

✓ Individual packing of each sieve with 100% recycled cardboard box, **which guarantees transport in perfect conditions.**

✓ Test certificate according to standard 2.1. EN 10204.

ACCESSORIES

- Pan 8".Ø (code 1000001).
- Pan 8".Ø wet way (code 1000011).
- Cover 8".Ø x 2".H (code 1000002).
- Cover 8".Ø x 2".H wet way (code 1000010).
- Rubber gasket 8".Ø (code J203).

203

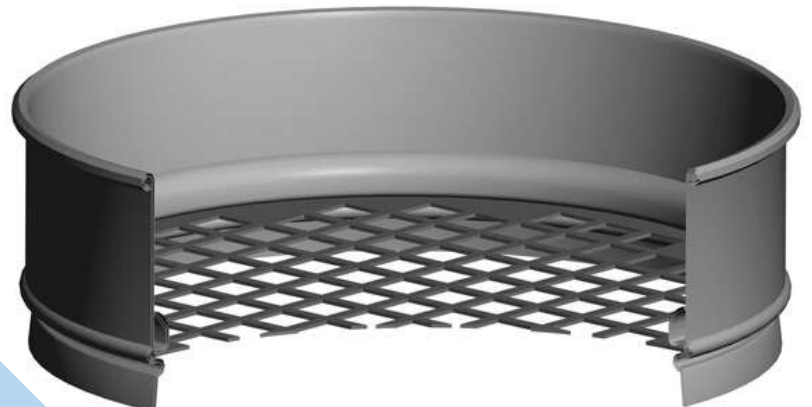
8".Ø x 2".H

STAINLESS STEEL FRAME



203.1 WIRE MESH SIEVES

| ISO 3310.1 | ASTM E-11-2013 | Code CISA | ISO 3310.1 | ASTM E-11-2013 | Code CISA | ISO 3310.1 | ASTM E-11-2013 | Code CISA | ISO 3310.1 | ASTM E-11-2013 | Code CISA |
|------------|----------------|-----------|------------|----------------|-----------|------------|----------------|-----------|------------|----------------|-----------|
| 20 µ | Nº 635 | 1000601 | 160 µ | | 1004801 | 1.00 mm | Nº 18 | 1009001 | 11.20 mm | 7/16 in. | 1014601 |
| 25 µ | Nº 500 | 1000801 | 180 µ | Nº 80 | 1005001 | 1.12 mm | | 1009201 | 12.50 mm | ½ in. | 1014801 |
| 32 µ | Nº 450 | 1001001 | 200 µ | | 1005201 | 1.18 mm | Nº 16 | 1009401 | 13.20 mm | 0.530 in. | 1015001 |
| 36 µ | | 1001201 | 212 µ | Nº 70 | 1005401 | 1.25 mm | | 1009601 | 14.00 mm | | 1015201 |
| 38 µ | Nº 400 | 1001401 | 224 µ | | 1005601 | 1.40 mm | Nº 14 | 1009801 | 16.00 mm | 5/8 in. | 1015401 |
| 40 µ | | 1001601 | 250 µ | Nº 60 | 1005801 | 1.60 mm | | 1010001 | 18.00 mm | | 1015601 |
| 45 µ | Nº 325 | 1001801 | 280 µ | | 1006001 | 1.70 mm | Nº 12 | 1010201 | 19.00 mm | 3/4 in. | 1015801 |
| 50 µ | | 1002001 | 300 µ | Nº 50 | 1006201 | 1.80 mm | | 1010401 | 20.00 mm | | 1016001 |
| 53 µ | Nº 270 | 1002201 | 315 µ | | 1006401 | 2.00 mm | Nº 10 | 1010601 | 22.40 mm | 7/8 in. | 1016201 |
| 56 µ | | 1002401 | 355 µ | Nº 45 | 1006601 | 2.24 mm | | 1010801 | 25.00 mm | 1.00 in. | 1016401 |
| 63 µ | Nº 230 | 1002601 | 400 µ | | 1006801 | 2.36 mm | Nº 8 | 1011001 | 26.50 mm | 1.06 in. | 1016601 |
| 71 µ | | 1002801 | 425 µ | Nº 40 | 1007001 | 2.50 mm | | 1011201 | 28.00 mm | | 1016801 |
| 75 µ | Nº 200 | 1003001 | 450 µ | | 1007201 | 2.80 mm | Nº 7 | 1011401 | 31.50 mm | 1 1/4 in. | 1017001 |
| 80 µ | | 1003201 | 500 µ | Nº 35 | 1007401 | 3.15 mm | | 1011601 | 35.50 mm | | 1017201 |
| 90 µ | Nº 170 | 1003401 | 560 µ | | 1007601 | 3.35 mm | Nº 6 | 1011801 | 37.50 mm | 1 1/2 in. | 1017401 |
| 100 µ | | 1003601 | 600 µ | Nº 30 | 1007801 | 3.55 mm | | 1012001 | 40.00 mm | | 1017601 |
| 106 µ | Nº 140 | 1003801 | 630 µ | | 1008001 | 4.00 mm | Nº 5 | 1012201 | 45.00 mm | 1 3/4 in. | 1017801 |
| 112 µ | | 1004001 | 710 µ | Nº 25 | 1008201 | 4.50 mm | | 1012401 | 50.00 mm | 2.00 in. | 1018001 |
| 125 µ | Nº 120 | 1004201 | 800 µ | | 1008401 | 4.75 mm | Nº 4 | 1012601 | 53.00 mm | 2.12 in. | 1018201 |
| 140 µ | | 1004401 | 850 µ | Nº 20 | 1008601 | 5.00 mm | | 1012801 | 56.00 mm | | 1018401 |
| 150 µ | Nº 100 | 1004601 | 900 µ | | 1008801 | 5.60 mm | Nº 3½ | 1013001 | 63.00 mm | 2 1/2 in. | 1018601 |
| | | | | | | 6.30 mm | ¼ in. | 1013201 | 71.00 mm | | 1018801 |
| | | | | | | 6.70 mm | 0.265 in. | 1013401 | 75.00 mm | 3.00 in. | 1019001 |
| | | | | | | 7.10 mm | | 1013601 | 80.00 mm | | 1019201 |
| | | | | | | 8.00 mm | 5/16 in. | 1013801 | 90.00 mm | 3 1/2 in. | 1019401 |
| | | | | | | 9.00 mm | | 1014001 | 100.00 mm | 4.00 in. | 1019601 |
| | | | | | | 9.50 mm | 3/8 in. | 1014201 | 106.00 mm | 4.24 in. | 1019801 |
| | | | | | | 10.00 mm | | 1014401 | 112.00 mm | | 1020001 |
| | | | | | | | | | 125.00 mm | 5.00 in. | 1020201 |



203

8".Ø x 2".H

STAINLESS STEEL FRAME



203.2 SIEVES WITH PERFORATED PLATE

Square hole

The sieves with perforated plates included in this list strictly comply with the quality criteria required by ASTM E-323 and ISO 3310.2, as well as with regard to openings and distances between centers and thicknesses.

To avoid partial perforations with possible error in the screening result, the plates are not perforated in the area in contact with the frame.

The standard EN 933-2 recommends the use of sieves with square perforated plates (according to ISO 3310.2), when the opening is 4 mm or more.

| ISO 3310.2 | ASTM E-323-2011 | Code CISA | ISO 3310.2 | ASTM E-323-2011 | Code CISA |
|------------|-----------------|-----------|------------|-----------------|-----------|
| 4.00 mm | 5/32 in. | 1012261 | 22.40 mm | 7/8 in. | 1016261 |
| 4.50 mm | | 1012461 | 25.00 mm | 1.00 in. | 1016461 |
| 4.75 mm | 3/16 in. | 1012661 | 26.50 mm | 1 1/18 in. | 1016661 |
| 5.00 mm | | 1012861 | 28.00 mm | | 1016861 |
| 5.60 mm | 7/32 in. | 1013061 | 31.50 mm | 1 1/4 in. | 1017061 |
| 6.30 mm | ¼ in. | 1013261 | 35.50 mm | | 1017261 |
| 6.70 mm | 17/64 in. | 1013461 | 37.50 mm | 1 1/2 in. | 1017461 |
| 7.10 mm | | 1013661 | 40.00 mm | | 1017661 |
| 8.00 mm | 5/16 in. | 1013861 | 45.00 mm | 1 3/4 in. | 1017861 |
| 9.00 mm | | 1014061 | 50.00 mm | 2.00 in. | 1018061 |
| 9.50 mm | 3/8 in. | 1014261 | 53.00 mm | 2 1/8 in. | 1018261 |
| 10.00 mm | | 1014461 | 56.00 mm | | 1018461 |
| 11.20 mm | 7/16 in. | 1014661 | 63.00 mm | 2 1/2 in. | 1018661 |
| 12.50 mm | ½ in. | 1014861 | 71.00 mm | | 1018861 |
| 13.20 mm | 0.530 in. | 1015061 | 75.00 mm | 3.00 in. | 1019061 |
| 14.00 mm | | 1015261 | 80.00 mm | | 1019261 |
| 16.00 mm | 5/8 in. | 1015461 | 90.00 mm | 3 1/2 in. | 1019461 |
| 18.00 mm | | 1015661 | 100.00 mm | 4.00 in. | 1019661 |
| 19.00 mm | 3/4 in. | 1015861 | 106.00 mm | 4.24 in. | 1019861 |
| 20.00 mm | | 1016061 | 112.00 mm | | 1020061 |
| | | | 125.00 mm | 5.00 in. | 1020261 |

Material of the perforated plates

Stainless steel AISI-304



203

8".Ø x 2".H

STAINLESS STEEL FRAME



203.3 SIEVES WITH PERFORATED PLATE

Round holes



| ISO 3310.2 | Code CISA | ISO 3310.2 | Code CISA |
|-------------|-----------|--------------|-----------|
| 0.50 mm.Ø | 1007441 | * 11,20 mm.Ø | 1014641 |
| 1.00 mm.Ø | 1009041 | * 12,50 mm.Ø | 1014841 |
| 1.80 mm.Ø | 1010441 | * 13,20 mm.Ø | 1015041 |
| 2.00 mm.Ø | 1010641 | 14,00 mm.Ø | 1015241 |
| 2.50 mm.Ø | 1011241 | * 16,00 mm.Ø | 1015441 |
| 3.55 mm.Ø | 1012041 | 18,00 mm.Ø | 1015641 |
| * 4.00 mm.Ø | 1012241 | * 19,00 mm.Ø | 1015841 |
| 4.50 mm.Ø | 1012441 | 20,00 mm.Ø | 1016041 |
| * 4.75 mm.Ø | 1012641 | * 22,40 mm.Ø | 1016241 |
| 5.00 mm.Ø | 1012841 | * 25,00 mm.Ø | 1016441 |
| * 5.60 mm.Ø | 1013041 | * 26,50 mm.Ø | 1016641 |
| * 6.30 mm.Ø | 1013241 | 28,00 mm.Ø | 1016841 |
| * 6.70 mm.Ø | 1013441 | * 31,50 mm.Ø | 1017041 |
| 7.10 mm.Ø | 1013641 | 35,50 mm.Ø | 1017241 |
| * 8.00 mm.Ø | 1013841 | * 37,50 mm.Ø | 1017441 |
| 9.00 mm.Ø | 1014041 | 40,00 mm.Ø | 1017641 |
| * 9.50 mm.Ø | 1014241 | * 45,00 mm.Ø | 1017841 |
| 10.00 mm.Ø | 1014441 | * 50,00 mm.Ø | 1018041 |

* according to ASTM E-323-2011 standard

Non-standardized round openings

| ISO 3310.2 | Code CISA | ISO 3310.2 | Code CISA |
|------------|-----------|------------|-----------|
| 11,00 mm.Ø | 1014541 | 21,00 mm.Ø | 1016081 |
| 12,00 mm.Ø | 1014741 | 22,00 mm.Ø | 1016141 |
| 13,00 mm.Ø | 1014941 | 24,00 mm.Ø | 1016341 |
| 14,50 mm.Ø | 1015341 | 30,00 mm.Ø | 1016941 |
| 15,00 mm.Ø | 1015381 | 32,00 mm.Ø | 1017141 |

Other openings on request

Material of the perforated plates

Stainless steel AISI-304

ACCESSORIES

Pan and cover
8".Ø x 2".H

Wet sieving
pan and cover 8".Ø

Rubber gasket
8".Ø

Calibration certificate
with uncertainty value

